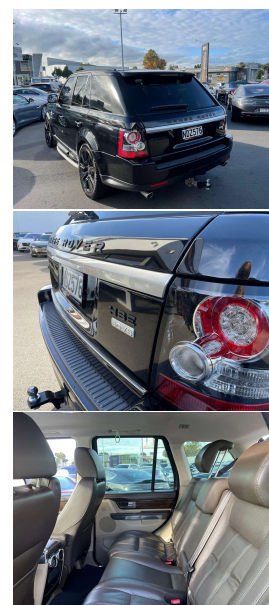
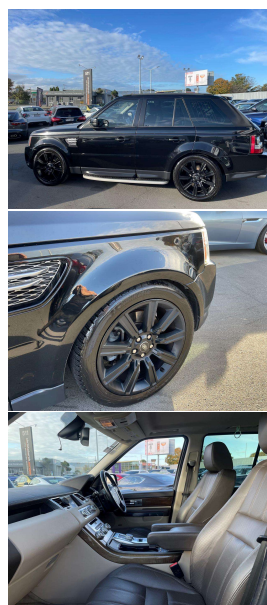


# 2013 Land Rover Range Rover Sport 3.0 SDV6



## VEHICLE INFORMATION

### Cash Price

Includes GST,  
Registration &  
Licensing

# \$34,995

Finance this vehicle  
from only

# \$120.98

per week\*

Total Amount Payable

\$41,952.08

finance  
**NOW**

### Body

SUV

### Odometer

134,000 km

### Engine

3000 cc, SDV6

### Fuel Type

Diesel

### Transmission

8 Speed Automatic, 4WD

### Wheels

20.0000"

### VIN

-

### Reg No.

QKU912

### Ext Colour

Santorini Black Metallic

### History

-

### Seats

5 seats

### Interior

Espresso Leather

### Audio

-

### Stock ID

12318



Gain peace of mind  
with Mechanical  
Breakdown Insurance.  
Ask us how.

2013 Range Rover Sport HSE 3.0 SDV6 Diesel 8 Speed Facelift Black-Pack, Hard to get and rare model!- New SDV6 engine and 8 Speed gearbox 2013MY model not released new in NZ. Santorini Black Metallic with Black 20 inch Sports Alloys and added Black Badging, Added Factory Roof Rails and Running Boards, One-Piece Electric Tailgate, Privacy Glass, Touch Screen revised Land Rover Infotainment with Bluetooth Phone and Music/Reverse Camera and NZ Navigation, Air Suspension, 4WD Terrain response, LED Lighting, Keyless entry, Towbar fitted, Full Electrics and more. A hot looking Range Rover!.

**christchurch european** | the european specialists

Phone 03 366 8328, Email [sales@christchurcheruropean.co.nz](mailto:sales@christchurcheruropean.co.nz)  
511 Blenheim Road, Sockburn, Christchurch 8042, New Zealand  
[www.christchurcheruropean.co.nz](http://www.christchurcheruropean.co.nz)

Niki Mills - 021 353 315  
Paul Mills - 022 536 0868  
Josh Giles - 021 087 54777

\* Finance calculation based on a 60 month term, 30% deposit and with an example annual fixed interest rate of 9.95%. Actual interest rate may be higher or lower. Includes an establishment fee of \$205.00. Full term total amount payable of \$41,952.08. Estimate only, not an offer of finance. Terms, conditions and lending criteria apply.