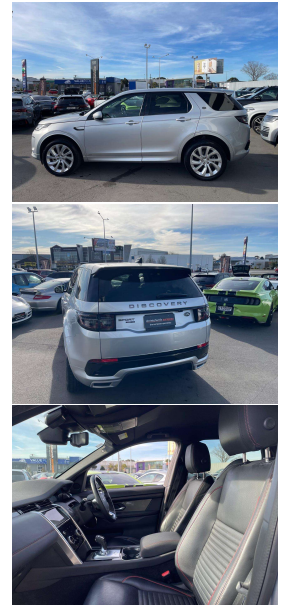
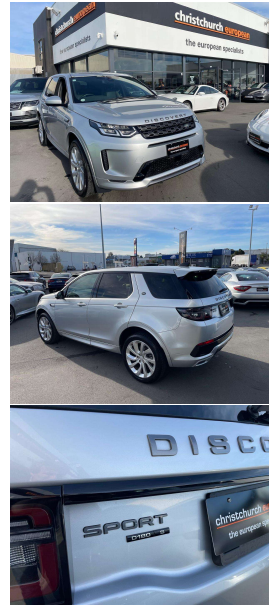


# 2020 Land Rover Discovery Sport D180 Diesel R-



## VEHICLE INFORMATION

### Cash Price

Includes GST,  
Registration &  
Licensing

**\$59,995**

Finance this vehicle  
from only

**\$206.68**

per week\*

Total Amount Payable

**\$71,735.66**

finance  
**NOW**



Gain peace of mind  
with Mechanical  
Breakdown Insurance.  
Ask us how.

### Body

5 door, RV/SUV

### Odometer

57,000 km

### Engine

2000 cc

### Fuel Type

Diesel

### Transmission

9 Speed Automatic, 4WD

### Wheels

20.0000"

### VIN

SALCA2AN3LH845262

### Reg No.

-

### Ext Colour

Silver Metallic

### History

-

### Seats

7 seats

### Interior

Black Leather Luxury Seating

### Audio

-

### Stock ID

12432

2020 Land Rover Discovery Sport D180 Diesel R-Dynamic SE 7 Seater New Model, Hard to get 7 Seater New Model Discovery Sport!, Premium Silver Metallic with Black Leather/Red Stitching detail, 9 Speed Automatic for amazing economy, 20 inch R-Dynamic Sports Alloys, Revised LED Lighting, Full Glass Cockpit with NZ NAV/Bluetooth Music and Phone Streaming/USB/360 Cameras/Apple Car Play, Push Button Start, Clear View Sight Interior mirror, Privacy Glass, Carbon inlays, Very economical 2.0 Diesel D180 engine, Heated Seats, Radar Adaptive Cruise Control, Heated Steering Wheel, Full Electrics and more. Limited number of these New Models available in NZ!

**christchurch european** | the european specialists

Phone 03 366 8328, Email [sales@christchurcheruropean.co.nz](mailto:sales@christchurcheruropean.co.nz)  
511 Blenheim Road, Sockburn, Christchurch 8042, New Zealand  
[www.christchurcheruropean.co.nz](http://www.christchurcheruropean.co.nz)

Niki Mills - 021 353 315  
Paul Mills - 022 536 0868  
Michael Mills - 022 043 3700

\* Finance calculation based on a 60 month term, 30% deposit and with an example annual fixed interest rate of 9.95%. Actual interest rate may be higher or lower. Includes an establishment fee of \$205.00. Full term total amount payable of \$71,735.66. Estimate only, not an offer of finance. Terms, conditions and lending criteria apply.