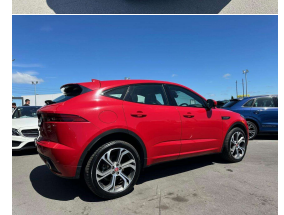


# 2018 Jaguar E-Pace D180 First Edition High-Spec



## VEHICLE INFORMATION

### Cash Price

Includes GST,  
Registration &  
Licensing

**\$44,995**

Finance this vehicle  
from only

**\$162.67**

per week\*

Total Amount Payable

**\$55,791.53**

finance  
**NOW**



Gain peace of mind  
with Mechanical  
Breakdown Insurance.  
Ask us how.

### Body

5 door, RV/SUV

### Odometer

48,000 km

### Engine

2000 cc, Diesel

### Fuel Type

Diesel

### Transmission

8 Speed Automatic, 4WD

### Wheels

20.0000"

### VIN

SADFA2AN7J1Z29101

### Reg No.

-

### Ext Colour

Caldera Red

### History

-

### Seats

5 seats, Leather

### Interior

Black Leather with Red Stitching,

### Audio

-

### Stock ID

13096

2018 Jaguar E-Pace D180 R-Dynamic First Edition AWD, Ltd Edition First Edition model, Attractive Red with Black Leather/Red Stitching detail, Low 48,000kms from new, Ultra-economical 2.0 Diesel, Heated/Electric/Memory Seats, Radar Adaptive Cruise Control, Heads-up display, 8 Speed Automatic, Panoramic Glass Roof, Push Button Start, Privacy Glass, Lane Keep Assist, 360 Surround Cameras, 20 inch Sports Alloys, Ambient Lighting, LED Lighting, Touch Screen NAV/CD/AUX/Bluetooth Phone and Music Streaming, Climate Air, Multiple Airbags, Electric Tailgate and much more!. Very good value for money here for the current shape!

Auction Grade 4.5/5 vehicle.

**christchurch european** | the european specialists

Phone 03 366 8328, Email [sales@christchurcheuropean.co.nz](mailto:sales@christchurcheuropean.co.nz)  
511 Blenheim Road, Sockburn, Christchurch 8042, New Zealand  
[www.christchurcheuropean.co.nz](http://www.christchurcheuropean.co.nz)

Niki Mills - 021 353 315  
Paul Mills - 022 536 0868  
Josh Giles - 021 087 54777

\* Finance calculation based on a 60 month term, 30% deposit and with an example annual fixed interest rate of 10.95%. Actual interest rate may be higher or lower. Includes an establishment fee of \$500.00 and a monthly maintenance fee of \$10.00. Full term total amount payable of \$55,791.53. Estimate only, not an offer of finance. Terms, conditions and lending criteria apply.