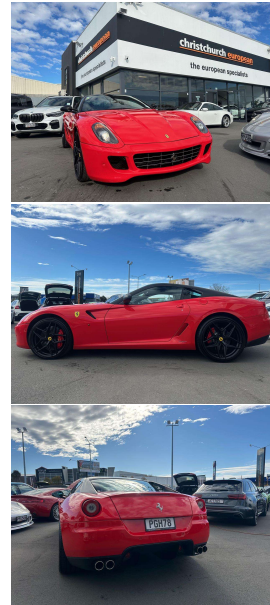


# 2009 Ferrari 599 GTB V12 Fiorano



## VEHICLE INFORMATION

### Cash Price

Includes GST,  
Registration &  
Licensing

**\$219,995**

Finance this vehicle  
from only

**\$755.20**

per week\*

Total Amount Payable

**\$262,350.53**

finance  
**NOW**



Gain peace of mind  
with Mechanical  
Breakdown Insurance.  
Ask us how.

### Body

2 door, Coupe

### Odometer

43,000 km

### Engine

6000 cc, V12

### Fuel Type

Petrol

### Transmission

Automatic

### Wheels

22.0000"

### VIN

-

### Reg No.

PGH78

### Ext Colour

Scuderia Red

### History

-

### Seats

2 seats

### Interior

Carbon Daytona Seats

### Audio

-

### Stock ID

12552

2009 Ferrari 599 GTB 6.0 V12 Fiorano, Flagship Ferrari V12 model, Only 43,000kms from new!, Iconic 612 HP 6.0 Litre naturally-aspirated V12 front-engined RWD Ferrari Grand Tourer- with the Enzo V12 engine fitted. Rarer and more attractive Formula 1 Scuderia Red, Factory Daytona Carbon Sports Seats, Yellow Dials, GTO Style 22 inch Black Sports Alloys (withMichelins) and Black Contrast Roof, Carbon interior trim upgrades, Red Stitching detail, Scuderia Shields, Upgraded Carbon Ceramic Brakes, Push Button Start, Launch Control, Pininfarina styling, F1 Semi-Automatic gearbox, Multiple Airbags, Pioneer CD/Stereo/Bluetooth with original Ferrari Radio included, Ferrari Car Cover included, Full Electrics etc. Limited numbers in NZ, once over \$600k new. A very safe investment.

**christchurch european** | the european specialists

Phone 03 366 8328, Email [sales@christchurcheruropean.co.nz](mailto:sales@christchurcheruropean.co.nz)  
511 Blenheim Road, Sockburn, Christchurch 8042, New Zealand  
[www.christchurcheruropean.co.nz](http://www.christchurcheruropean.co.nz)

Niki Mills - 021 353 315  
Paul Mills - 022 536 0868  
Josh Giles - 021 087 54777

\* Finance calculation based on a 60 month term, 30% deposit and with an example annual fixed interest rate of 9.95%. Actual interest rate may be higher or lower. Includes an establishment fee of \$205.00. Full term total amount payable of \$262,350.53. Estimate only, not an offer of finance. Terms, conditions and lending criteria apply.