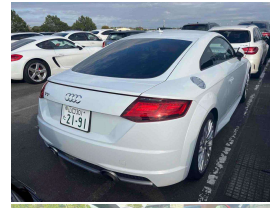


2015 Audi TT 2.0 TFSI S Line Quattro Coupe



christchurch european
the european specialists
NZ's Largest Independent European Dealership

- ✔ Full Line of After-Sales Service
- ✔ Competitive Finance via VTC/Finance House
- ✔ Same Day and All-About Cash Inclusions
- ✔ Nationwide Free Delivery

Checklist: Accredited and have over 100 years experience from Christchurch European Dealership in NZ. All purchases made under the protection of the NZ Consumer Guarantees Act 2006.

Christchurch European Dealership
100 Blenheim Road, Sockburn, Christchurch 8042
Phone: 03 366 8328
Email: sales@christchurch-european.co.nz
www.christchurch-european.co.nz

Now available from: **autosure** **brnz** **UDC**

VEHICLE INFORMATION

Cash Price

Includes GST,
Registration &
Licensing

\$37,995

Finance this vehicle
from only

\$131.26

per week*

Total Amount Payable

\$45,526.11

finance
NOW



Gain peace of mind
with Mechanical
Breakdown Insurance.
Ask us how.

Body

2 door, Coupe

Odometer

89,000 km

Engine

2000 cc, TFSI

Fuel Type

Petrol

Transmission

7 Speed Auto

Wheels

19.0000"

VIN

TRUZZZFV0G1005956

Reg No.

-

Ext Colour

White

History

-

Seats

4 seats

Interior

Part Leather/Velour

Audio

-

Stock ID

13097

2015 Audi TT 2.0 TFSI S Line Quattro New Shape, Funky and Ultra-Modern new shape Audi TT!. Special order White with Part Black Leather colour combination, Factory 19" S Line Sports Alloys, LED Matrix Lighting, Full Digital/Virtual Dash cluster, Audi MMI with Stereo/Bluetooth Phone and Music Streaming/NZ NAV and Reverse Camera, Heated Seats, Electric Spoiler, Multiple Airbags, ABS/ESP, Climate Air, Full Electrics etc. A proper Sports car you can still fit the kids in!

Arriving Soon, Small holding deposit will secure this vehicle pre-arrival.

christchurch european | the european specialists

Phone 03 366 8328, Email sales@christchurch-european.co.nz
511 Blenheim Road, Sockburn, Christchurch 8042, New Zealand
www.christchurch-european.co.nz

Niki Mills - 021 353 315
Paul Mills - 022 536 0868
Michael Mills - 022 043 3700

* Finance calculation based on a 60 month term, 30% deposit and with an example annual fixed interest rate of 9.95%. Actual interest rate may be higher or lower. Includes an establishment fee of \$205.00. Full term total amount payable of \$45,526.11. Estimate only, not an offer of finance. Terms, conditions and lending criteria apply.