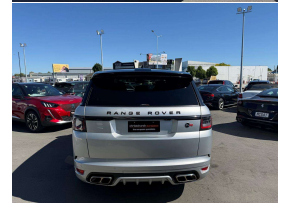
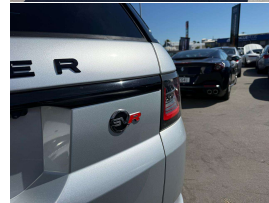


# 2018 Land Rover Range Rover Sport SVR



## VEHICLE INFORMATION

### Cash Price

Includes GST,  
Registration &  
Licensing

**\$129,995**

Finance this vehicle  
from only

**\$446.66**

per week\*

Total Amount Payable

**\$155,129.66**

finance  
**NOW**



Gain peace of mind  
with Mechanical  
Breakdown Insurance.  
Ask us how.

### Body

5 door, RV/SUV

### Odometer

66,000 km

### Engine

5000 cc, V8 Supercharged

### Fuel Type

Petrol

### Transmission

8 Speed Automatic, 4WD

### Wheels

22.0000"

### VIN

SALWA2AEXJA802704

### Reg No.

-

### Ext Colour

Silver Metallic

### History

-

### Seats

5 seats

### Interior

Tan/Black Two Tone SVR Seats

### Audio

-

### Stock ID

13001

2018 Range Rover Sport SVR 5.0 V8 Facelift Supercharged, Top of the line SVR Land Rover 'Special Operations Vehicle' 575 BHP V8 Supercharged Supercar like Performance and Sound!. Upgraded Dual Exhausts fitted, Factory colour-coded upgraded Carbon Bonnet with SVR Air intakes, 22 inch Factory SVR Sports Alloys in Gloss Black, Black Badging, Red Brake Calipers, Stunning Black/Tan Premium SVR Leather Sports Seats and Steering Wheel, Heated and Cooling Seats, Heated Steering Wheel, Heads-up display, Radar Adaptive Cruise Control, Virtual Dash Cluster with NZ NAV/CD/AUX/Bluetooth Phone and Music/360 Cameras/Apple Car Play, Switchable Exhaust Button, LED Lighting, Black Roof, Privacy Glass, Panoramic Glass Sunroof, Console Fridge included, On Board Digital TV, Ambient Lighting, Full Electrics etc. A very cool car, Luxury, Performance, Sound and Range Rover looks all combined!.

**christchurch european** | the european specialists

Phone 03 366 8328, Email [sales@christchurcheruropean.co.nz](mailto:sales@christchurcheruropean.co.nz)  
511 Blenheim Road, Sockburn, Christchurch 8042, New Zealand  
[www.christchurcheruropean.co.nz](http://www.christchurcheruropean.co.nz)

Niki Mills - 021 353 315  
Paul Mills - 022 536 0868  
Josh Giles - 021 087 54777

\* Finance calculation based on a 60 month term, 30% deposit and with an example annual fixed interest rate of 9.95%. Actual interest rate may be higher or lower. Includes an establishment fee of \$205.00. Full term total amount payable of \$155,129.66. Estimate only, not an offer of finance. Terms, conditions and lending criteria apply.