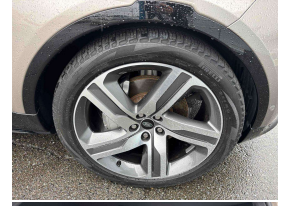


# 2021 Land Rover Discovery 5 D300 HSE R-Dynamic



## VEHICLE INFORMATION

### Cash Price

Includes GST,  
Registration &  
Licensing

**\$109,995**

Finance this vehicle  
from only

**\$378.09**

per week\*

Total Amount Payable

**\$131,302.80**

finance  
**NOW**



Gain peace of mind  
with Mechanical  
Breakdown Insurance.  
Ask us how.

### Body

5 door, SUV

### Odometer

59,000 km

### Engine

3000 cc, Straight Six

### Fuel Type

Diesel

### Transmission

8 Speed Automatic, 4WD

### Wheels

22.0000"

### VIN

SALRA2AW3N2459501

### Reg No.

-

### Ext Colour

Lautau Bronze Metallic

### History

-

### Seats

7 seats

### Interior

Black/Cream Two Tone Leather

### Audio

-

### Stock ID

13163

2021 Land Rover Discovery 5 D300 R-Dynamic HSE New Model 7 Seater, New Generation 2021MY D300 Straight-Six/650NM Discovery 5 with multiple exterior/interior upgrades, Stunning Lautau Bronze Metallic with Two-Tone Black/Cream Windsor HSE Luxury Leather, 22 inch HSE Factory Sports Alloys, Sliding Panoramic Glass Roof, Black Exterior Package, Premium Heated and Cooling HSE Seats, Electric Fold-away Running Boards, Radar Cruise Control, Climate Air, 360 Surround Camera Package, Widescreen revised Virtual Dash Cluster with NZ NAV/BT/AUX/USBs/In-Control Aps/Car Play, Added Roof Rails fitted, Heated Steering Wheel, Privacy Glass, LED Lighting, Meridian Surround Sound, Air Suspension, Full Electrics etc. This car will be ready to go for Christmas!

**christchurch european**

**the european specialists**

Phone 03 366 8328, Email [sales@christchurcheuropean.co.nz](mailto:sales@christchurcheuropean.co.nz)  
511 Blenheim Road, Sockburn, Christchurch 8042, New Zealand  
[www.christchurcheuropean.co.nz](http://www.christchurcheuropean.co.nz)

Niki Mills - 021 353 315  
Paul Mills - 022 536 0868  
Michael Mills - 022 043 3700

\* Finance calculation based on a 60 month term, 30% deposit and with an example annual fixed interest rate of 9.95%. Actual interest rate may be higher or lower. Includes an establishment fee of \$205.00. Full term total amount payable of \$131,302.80. Estimate only, not an offer of finance. Terms, conditions and lending criteria apply.