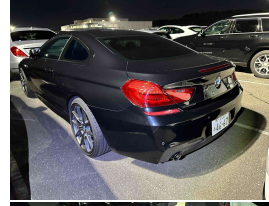


2014 BMW 640i Coupe



VEHICLE INFORMATION

Cash Price

Includes GST,
Registration &
Licensing

\$29,995

Finance this vehicle
from only

\$103.83

per week*

Total Amount Payable

\$35,995.37

finance
NOW



Gain peace of mind
with Mechanical
Breakdown Insurance.
Ask us how.

Body

2 door, Coupe

Odometer

89,000 km

Engine

3000 cc

Fuel Type

Petrol

Transmission

8 Speed Automatic

Wheels

20.0000"

VIN

WBALW32090DW91853

Reg No.

-

Ext Colour

Black Metallic

History

-

Seats

4 seats

Interior

Tan Leather

Audio

-

Stock ID

13161

2014 BMW 640i 3.0 Turbo Coupe, BMW's very attractive 6 Series Coupe model! Upgraded 20 inch Sports Alloys with Yellow Brake Calipers, Full Glass Panoramic Roof, LED Lighting, Multiple Airbags, Luxury Woodgrain inlays, BMW I-Drive with NZ NAV/Bluetooth Phone and Music/AUX/Stereo, Heated/Electric/Memory Seats, Climate Air, Remote Locking, ABS Brakes, Full Electrics etc. Once a \$200k car, now compare this value!

Arriving Soon, Small holding deposit will secure this vehicle pre-arrival.

christchurch european | the european specialists

Phone 03 366 8328, Email sales@christchurcheuropean.co.nz
511 Blenheim Road, Sockburn, Christchurch 8042, New Zealand
www.christchurcheuropean.co.nz

Niki Mills - 021 353 315
Paul Mills - 022 536 0868
Michael Mills - 022 043 3700

* Finance calculation based on a 60 month term, 30% deposit and with an example annual fixed interest rate of 9.95%. Actual interest rate may be higher or lower. Includes an establishment fee of \$205.00. Full term total amount payable of \$35,995.37. Estimate only, not an offer of finance. Terms, conditions and lending criteria apply.