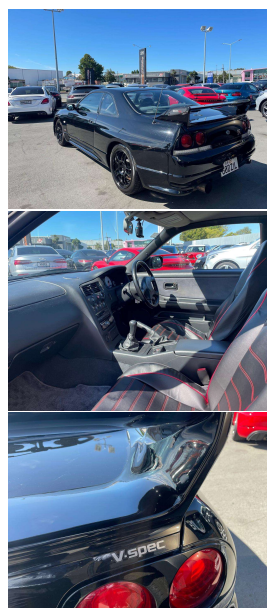


# 1996 Nissan Skyline GTR R33 V-Spec 5 Spd



## VEHICLE INFORMATION

Cash Price  
Includes GST,  
Registration &  
Licensing

**\$129,995**

Body  
2 door, Coupe

Odometer  
98,000 km

Engine  
2600 cc, Twin Turbo

Fuel Type  
Petrol

Transmission  
5-Speed Manual, 4WD

Wheels  
17.0000"

VIN  
-

Reg No.  
G0DZ1L

Ext Colour  
Black Metallic

History  
-

Seats  
4 seats

Interior  
Black GTR Seats

Audio  
-

Stock ID  
10981

Finance this vehicle  
from only

**\$446.66**  
per week\*

Total Amount Payable  
\$155,129.66

finance  
**NOW**

 Gain peace of mind  
with Mechanical  
Breakdown Insurance.  
Ask us how.

1996 Nissan Skyline R33 GTR V-Spec. JDM Performance Icon- with prices currently going mad overseas! Auction Grade 4/5 vehicle-recorded 1 Owner/Non Smoker in Japan. Factory R33 GTR Alloys in Black, 2.6 Litre Twin-Turbo RB26 DETT engine, Comprehensive Service History and all original Docs/Mats etc with the vehicle, Upgraded Sports Exhaust System from the R33 400R, 4WD, Air Conditioning, NISMO Intercooler, Suspension and Dash Cluster upgrade (History recorded). Ltd Edition Gold GTR Badging, Better than money in the bank today!

Note- Leather Seat covers only on for protection.

**christchurch european** | the european specialists

Phone 03 366 8328, Email sales@christchurcheruropean.co.nz  
511 Blenheim Road, Sockburn, Christchurch 8042, New Zealand  
www.christchurcheruropean.co.nz

Niki Mills - 021 353 315  
Paul Mills - 022 536 0868  
Michael Mills - 022 043 3700

\* Finance calculation based on a 60 month term, 30% deposit and with an example annual fixed interest rate of 9.95%. Actual interest rate may be higher or lower. Includes an establishment fee of \$205.00. Full term total amount payable of \$155,129.66. Estimate only, not an offer of finance. Terms, conditions and lending criteria apply.