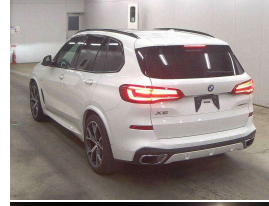


# 2019 BMW X5 30d X-Drive Motorsport New Shape



## VEHICLE INFORMATION

### Cash Price

Includes GST,  
Registration &  
Licensing

**\$69,995**

Finance this vehicle  
from only

**\$240.96**

per week\*

Total Amount Payable

**\$83,649.09**

finance  
**NOW**



Gain peace of mind  
with Mechanical  
Breakdown Insurance.  
Ask us how.

### Body

5 door, RV/SUV

### Odometer

87,000 km

### Engine

3000 cc

### Fuel Type

Diesel

### Transmission

8 Speed Automatic, 4WD

### Wheels

21.0000"

### VIN

WBACV62070LM58936

### Reg No.

-

### Ext Colour

White

### History

-

### Seats

5 seats

### Interior

Tan Leather

### Audio

-

### Stock ID

13021

2019 BMW X5 30d Diesel xDrive 4WD Motorsport New Shape, New Generation X5! Easy care White with Premium Tan Leather, A high-spec vehicle with added Heads-up display, Panoramic Glass Electric Roof, 21 inch Motorsport Sports Alloys, 360 Cameras, Heated/Electric Sports Seats, Ambient Lighting, M Sport Aerodynamic Styling, Roof Rails in High-Gloss Black, Radar Adaptive Cruise Control and Lane Assist, Enhanced Bluetooth with Wireless Charging, Pedestrian Safety, LED Lighting, BMW Live Digital Cockpit Professional with NZ Nav/Bluetooth Streaming, Privacy Glass etc, USB Charging ports, Reverse Camera, Full Electrics etc. A stunning looking car. Compare the value here!

Arriving Soon, Small holding deposit will secure this vehicle pre-arrival.

**christchurch european** | the european specialists

Phone 03 366 8328, Email [sales@christchurcheuropean.co.nz](mailto:sales@christchurcheuropean.co.nz)  
511 Blenheim Road, Sockburn, Christchurch 8042, New Zealand  
[www.christchurcheuropean.co.nz](http://www.christchurcheuropean.co.nz)

Niki Mills - 021 353 315  
Paul Mills - 022 536 0868  
Michael Mills - 022 043 3700

\* Finance calculation based on a 60 month term, 30% deposit and with an example annual fixed interest rate of 9.95%. Actual interest rate may be higher or lower. Includes an establishment fee of \$205.00. Full term total amount payable of \$83,649.09. Estimate only, not an offer of finance. Terms, conditions and lending criteria apply.