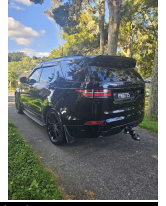


# 2020 Land Rover Discovery 5 HSE 3.0 Td6 Black



## VEHICLE INFORMATION

### Cash Price

Includes GST,  
Registration &  
Licensing

**\$79,995**

Finance this vehicle  
from only

**\$275.25**

per week\*

Total Amount Payable

**\$95,562.51**

finance  
**NOW**



Gain peace of mind  
with Mechanical  
Breakdown Insurance.  
Ask us how.

### Body

RV/SUV

### Odometer

89,000 km

### Engine

3000 cc

### Fuel Type

Diesel

### Transmission

8 Speed Automatic, 4WD

### Wheels

21.0000"

### VIN

-

### Reg No.

PMB715

### Ext Colour

Black Metallic

### History

-

### Seats

7 seats

### Interior

Black Leather

### Audio

-

### Stock ID

13384

2020 Land Rover Discovery 5 HSE 3.0 Td6 Facelift Black Edition 7 Seater, NZ New top spec HSE in Santorini Black Metallic with Black Premium HSE Leather Seats (the most comfortable option!), Dual Glass Electric Roofs, 21 inch HSE Sports Alloys in Gloss Black, Radar Adaptive Cruise Control, Lane Departure Warning, Heated Seats, Running Boards and Mudflaps fitted, Added Heated Steering Wheel, Full Digital 20MY Glass Cockpit, Premium surround Meridian Audio System, Factory Detachable Towbar, Added cost-option Black Roof Rails, Black Plates, Privacy Glass, LED Lighting, Air Suspension with 4WD Terrain response, Dark Piano Wood inlays, Touch Screen NZ NAV/CD/AUX/Bluetooth Streaming/Reverse Camera/Apple Car Play, Privacy Glass, Black Badging, Black exterior Grill inlays, Full Electrics etc. Late Model and popular Discovery 5 Kiwi new motoring here!

**christchurch european** | the european specialists

Phone 03 366 8328, Email [sales@christchurcheruropean.co.nz](mailto:sales@christchurcheruropean.co.nz)  
511 Blenheim Road, Sockburn, Christchurch 8042, New Zealand  
[www.christchurcheruropean.co.nz](http://www.christchurcheruropean.co.nz)

Niki Mills - 021 353 315  
Paul Mills - 022 536 0868  
Josh Giles - 021 087 54777

\* Finance calculation based on a 60 month term, 30% deposit and with an example annual fixed interest rate of 9.95%. Actual interest rate may be higher or lower. Includes an establishment fee of \$205.00. Full term total amount payable of \$95,562.51. Estimate only, not an offer of finance. Terms, conditions and lending criteria apply.