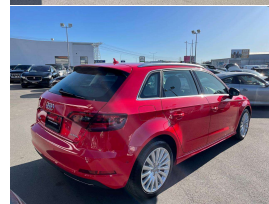
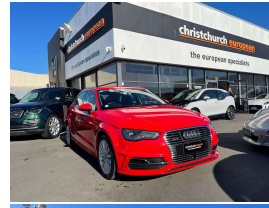


2015 Audi A3 E-Tron PHEV Hatchback



VEHICLE INFORMATION

Cash Price

Includes GST,
Registration &
Licensing

\$22,995

Finance this vehicle
from only

\$85.48

per week*

Total Amount Payable

\$29,124.57

finance
NOW



Gain peace of mind
with Mechanical
Breakdown Insurance.
Ask us how.

Body

5 door, Hatchback

Odometer

62,000 km

Engine

1400 cc, Plug-In Hybrid

Fuel Type

-

Transmission

Automatic

Wheels

18.0000"

VIN

-

Reg No.

SKF4

Ext Colour

Red

History

-

Seats

5 seats

Interior

Black Sports Seats

Audio

-

Stock ID

13433

2015 Audi A3 E-Tron PHEV Hatchback, Hard to get model! 1.4 TSI engine combined with a Plug-in Electric 75kW Electric motor for Electric/Hybrid modes, Amazing 1.6 Litres/Per 100kms economy!, Factory 18 inch Sport Alloys and Sports Seats, LED Running Lights, Cruise Control, Audi MMI CD/Stereo/Bluetooth Phone and Music Streaming/NZ Nav and Reverse Camera, Multiple Airbags, Full Electrics etc. Embrace this new technology and save on Running costs now!

christchurch european | the european specialists

Phone 03 366 8328, Email sales@christchurcheruropean.co.nz
511 Blenheim Road, Sockburn, Christchurch 8042, New Zealand
www.christchurcheruropean.co.nz

Niki Mills - 021 353 315
Paul Mills - 022 536 0868
Josh Giles - 021 087 54777

* Finance calculation based on a 60 month term, 30% deposit and with an example annual fixed interest rate of 10.95%. Actual interest rate may be higher or lower. Includes an establishment fee of \$500.00 and a monthly maintenance fee of \$10.00. Full term total amount payable of \$29,124.57. Estimate only, not an offer of finance. Terms, conditions and lending criteria apply.