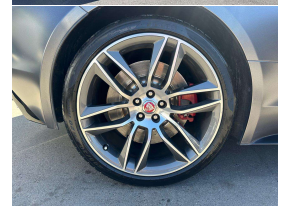


# 2014 Jaguar F-Type R 5.0 V8 Supercharged



## VEHICLE INFORMATION

### Cash Price

Includes GST,  
Registration &  
Licensing

**\$79,995**

Finance this vehicle  
from only

**\$285.45**

per week\*

Total Amount Payable

**\$98,216.25**

finance  
**NOW**



Gain peace of mind  
with Mechanical  
Breakdown Insurance.  
Ask us how.

### Body

2 door, Coupe

### Odometer

62,000 km

### Engine

5000 cc, Supercharged

### Fuel Type

Petrol

### Transmission

8 Speed Automatic, Rear Wheel

### Wheels

20.0000"

### VIN

SAJAC63HXFMK19759

### Reg No.

-

### Ext Colour

Grey Matte Wrap

### History

-

### Seats

2 seats

### Interior

Black/Red R Sports Seats

### Audio

-

### Stock ID

12930

2014 Jaguar F-Type R 5.0 V8 Supercharged Coupe, Flagship 540HP F-Type R Supercharged, Low 62,000kms from new, Stunning Grey Wrap finish with Two-tone Black/Red Leather R Sports Seats, Upgraded 20 inch R Sports Alloys with Red Brake Calipers, Heated Seats, Blind-spot monitors, 8-Speed Quickshift, Meridian Surround Sound System, Switchable Dual Sports Exhausts, Electric Tailgate, Dynamic Mode, Rear Camera, Adaptive Dynamics, Bluetooth Streaming/NZ Navigation/USB, Keyless entry/start, R-Sports Steering Wheel, Cruise Control and more. The ultimate F-Type! Stand out from the crowd in this!.

**christchurch european**

**the european specialists**

Phone 03 366 8328, Email [sales@christchurcheruropean.co.nz](mailto:sales@christchurcheruropean.co.nz)  
511 Blenheim Road, Sockburn, Christchurch 8042, New Zealand  
[www.christchurcheruropean.co.nz](http://www.christchurcheruropean.co.nz)

Niki Mills - 021 353 315  
Paul Mills - 022 536 0868  
Josh Giles - 021 087 54777

\* Finance calculation based on a 60 month term, 30% deposit and with an example annual fixed interest rate of 10.95%. Actual interest rate may be higher or lower. Includes an establishment fee of \$500.00 and a monthly maintenance fee of \$10.00. Full term total amount payable of \$98,216.25. Estimate only, not an offer of finance. Terms, conditions and lending criteria apply.