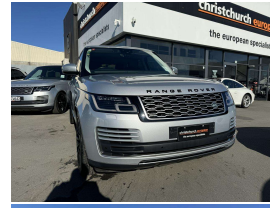


# 2018 Land Rover Range Rover Vogue SE TDV6 New



## VEHICLE INFORMATION

### Cash Price

Includes GST,  
Registration &  
Licensing

**\$99,995**

Finance this vehicle  
from only

**\$343.81**

per week\*

Total Amount Payable

**\$119,389.37**

finance  
**NOW**



Gain peace of mind  
with Mechanical  
Breakdown Insurance.  
Ask us how.

### Body

5 door, SUV / 4x4

### Odometer

60,000 km

### Engine

3000 cc, TDV6

### Fuel Type

Diesel

### Transmission

8 Speed Automatic, 4WD

### Wheels

22.0000"

### VIN

SALGA2AK4JA515384

### Reg No.

-

### Ext Colour

Silver Metallic

### History

-

### Seats

5 seats

### Interior

Black Leather

### Audio

-

### Stock ID

12855

2018 Range Rover Vogue SE Facelift Model, Very high-spec New Generation Vogue 'SE' Facelift model with 22 inch Turbine Gloss Black Sports Alloys fitted, Only 60,000kms from new, New Generation Vogue Styling, Revised Grills, Matrix LED Lighting, Black Badging, Virtual Glass Cockpit and much more!, Privacy Glass, Full Self Parking, Full Leather, Heated Seats, Electric Deployable Towbar, Piano Wood inlays, Glass Panoramic Roof, Meridian Premium Sound System, 4 Zone Climate Air, Heated Steering Wheel, Virtual Cluster with NZ NAV/Bluetooth and Music Streaming, Ambient Lighting, Push Button Start and much more. The ultimate in 4WD Luxury. A hot look here!

**christchurch european** | the european specialists

Phone 03 366 8328, Email [sales@christchurcheruropean.co.nz](mailto:sales@christchurcheruropean.co.nz)  
511 Blenheim Road, Sockburn, Christchurch 8042, New Zealand  
[www.christchurcheruropean.co.nz](http://www.christchurcheruropean.co.nz)

Niki Mills - 021 353 315  
Paul Mills - 022 536 0868  
Josh Giles - 021 087 54777

\* Finance calculation based on a 60 month term, 30% deposit and with an example annual fixed interest rate of 9.95%. Actual interest rate may be higher or lower. Includes an establishment fee of \$205.00. Full term total amount payable of \$119,389.37. Estimate only, not an offer of finance. Terms, conditions and lending criteria apply.