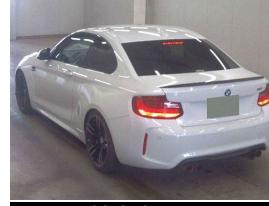


# 2016 BMW M2 Coupe 365 BHP



## VEHICLE INFORMATION

### Cash Price

Includes GST,  
Registration &  
Licensing

**\$49,995**

Finance this vehicle  
from only

**\$172.40**

per week\*

Total Amount Payable

**\$59,822.23**

finance  
**NOW**



Gain peace of mind  
with Mechanical  
Breakdown Insurance.  
Ask us how.

### Body

2 door, Coupe

### Odometer

89,000 km

### Engine

3000 cc, Twin Turbo

### Fuel Type

Petrol

### Transmission

Automatic

### Wheels

19.0000"

### VIN

WBS1H92080V599918

### Reg No.

-

### Ext Colour

White

### History

-

### Seats

4 seats

### Interior

Black Leather with Blue M

### Audio

-

### Stock ID

12934

2016 BMW M2 3.0 Twin-Turbo Coupe, BMW's pocket-rocket Performance Coupe!, 19 inch Dark Grey Factory M2 Sports Alloys with Blue Brake Calipers, 365 BHP 3.0 Twin-Turbo Performance, LED Lighting, Black Leather with BMW Individual Light Blue Stitching detail, Heated/Electric Seats, BMW i Drive with CD/Stereo/Bluetooth Streaming/NZ Nav and Reverse Camera, Parking Sensors, Factory Carbon Motorsport inlays, Cruise Control, Push Button Start, Full Electrics etc. One of BMW's best models!

Arriving Soon, Small holding deposit will secure this vehicle pre-arrival.

**christchurch european** | the european specialists

Phone 03 366 8328, Email [sales@christchurcheuropean.co.nz](mailto:sales@christchurcheuropean.co.nz)  
511 Blenheim Road, Sockburn, Christchurch 8042, New Zealand  
[www.christchurcheuropean.co.nz](http://www.christchurcheuropean.co.nz)

Niki Mills - 021 353 315  
Paul Mills - 022 536 0868  
Michael Mills - 022 043 3700

\* Finance calculation based on a 60 month term, 30% deposit and with an example annual fixed interest rate of 9.95%. Actual interest rate may be higher or lower. Includes an establishment fee of \$205.00. Full term total amount payable of \$59,822.23. Estimate only, not an offer of finance. Terms, conditions and lending criteria apply.