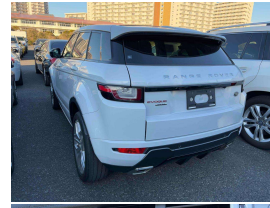


# 2015 Land Rover Range Rover Evoque 2.0T SI4



## VEHICLE INFORMATION

Cash Price

Includes GST,  
Registration &  
Licensing

**\$39,995**

Finance this vehicle  
from only

**\$145.12**

per week\*

Total Amount Payable

**\$49,730.86**

finance  
**NOW**



Gain peace of mind  
with Mechanical  
Breakdown Insurance.  
Ask us how.

Body

5 door, RV/SUV

Odometer

66,000 km

Engine

2000 cc

Fuel Type

Petrol

Transmission

9 Speed Automatic, 4WD

Wheels

20.0000"

VIN

SALVA2AG6GH078393

Reg No.

-

Ext Colour

Fuji White

History

-

Seats

5 seats

Interior

Black Leather

Audio

-

Stock ID

13485

2015 Range Rover Evoque SI4 HSE Dynamic 9-Speed Facelift, Popular White with Black Dynamic Leather Sports Seats, 20 inch HSE Dynamic Stealth Sports Alloys in Silver, Facelift LED Lighting, 9 Speed Automatic with Stop/Start, Added Radar Cruise Control, LR Touch infotainment with NZ NAV, Bluetooth Phone and Music Streaming, 360 and Reverse Cameras, Black Grill inserts, Heated Front and Rear Seats, Privacy Glass, LR 4WD Terrain response, Electric Tailgate, Meridian Surround Sound, Ambient Interior Lighting, Full Electrics etc. Hard to buy this good looking and low kms!

Arriving Soon, Small holding deposit will secure this vehicle pre-arrival.

**christchurch european** | the european specialists

Phone 03 366 8328, Email [sales@christchurcheruropean.co.nz](mailto:sales@christchurcheruropean.co.nz)  
511 Blenheim Road, Sockburn, Christchurch 8042, New Zealand  
[www.christchurcheruropean.co.nz](http://www.christchurcheruropean.co.nz)

Niki Mills - 021 353 315  
Paul Mills - 022 536 0868  
Josh Giles - 021 087 54777

\* Finance calculation based on a 60 month term, 30% deposit and with an example annual fixed interest rate of 10.95%. Actual interest rate may be higher or lower. Includes an establishment fee of \$500.00 and a monthly maintenance fee of \$10.00. Full term total amount payable of \$49,730.86. Estimate only, not an offer of finance. Terms, conditions and lending criteria apply.