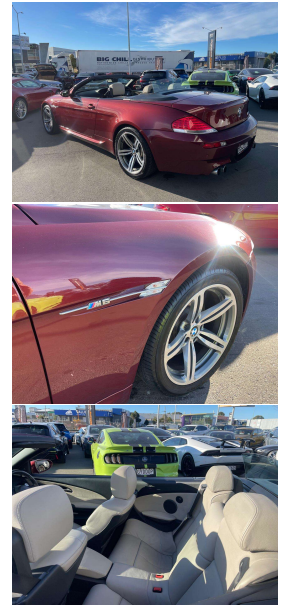
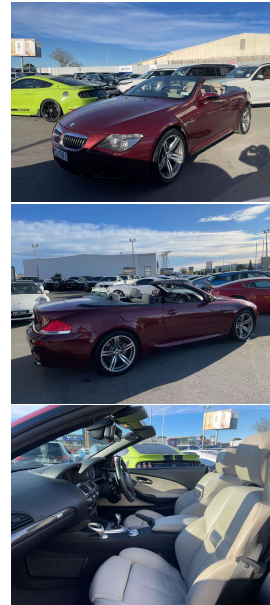


# 2007 BMW M6 5.0 V10 Cabriolet NZ New



## VEHICLE INFORMATION

### Cash Price

Includes GST,  
Registration &  
Licensing

**\$39,995**

Finance this vehicle  
from only

**\$145.12**

per week\*

Total Amount Payable

**\$49,730.86**

finance  
**NOW**



Gain peace of mind  
with Mechanical  
Breakdown Insurance.  
Ask us how.

### Body

2 door, Convertible

### Odometer

81,000 km

### Engine

5000 cc, V10

### Fuel Type

Petrol

### Transmission

Automatic

### Wheels

18.0000"

### VIN

-

### Reg No.

HSJ591

### Ext Colour

Burgundy Red Metallic

### History

-

### Seats

4 seats

### Interior

Ivory M Leather

### Audio

-

### Stock ID

12553

2007 BMW M6 5.0 V10 SMG Soft-top Convertible, NZ New with Full History and a future very collectable model! Attractive and unique Wine Red Metallic with Ivory M Leather, Only 81,000kms from new!, Heated/Electric Seats, Electric Soft-top Roof, Dual M6 Sports Exhausts, Heads-up display, Carbon interior inlays, BMW I-Drive CD/Stereo/AUX/NZ Navigation/Bluetooth, Reverse Camera fitted, 507 BHP naturally aspirated 5.0 V10 performance, SMG Semi-Automatic, Push Button Start, Full Electrics and more. A very hard car to find and one to put away as the last of the V10s!

Note- Just fully serviced.

**christchurch european** | the european specialists

Phone 03 366 8328, Email [sales@christchurcheruropean.co.nz](mailto:sales@christchurcheruropean.co.nz)  
511 Blenheim Road, Sockburn, Christchurch 8042, New Zealand  
[www.christchurcheruropean.co.nz](http://www.christchurcheruropean.co.nz)

Niki Mills - 021 353 315  
Paul Mills - 022 536 0868  
Josh Giles - 021 087 54777

\* Finance calculation based on a 60 month term, 30% deposit and with an example annual fixed interest rate of 10.95%. Actual interest rate may be higher or lower. Includes an establishment fee of \$500.00 and a monthly maintenance fee of \$10.00. Full term total amount payable of \$49,730.86. Estimate only, not an offer of finance. Terms, conditions and lending criteria apply.