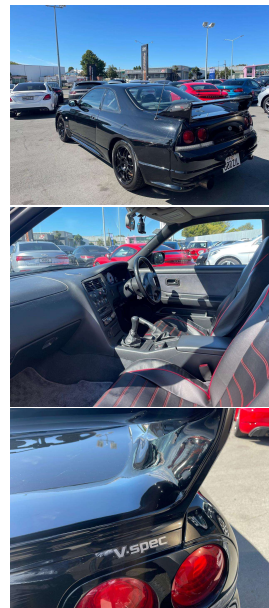


1996 Nissan Skyline GTR R33 V-Spec 5 Spd



VEHICLE INFORMATION

Cash Price

Includes GST,
Registration &
Licencing

\$129,995

Finance this vehicle
from only

\$446.66

per week*

Total Amount Payable

\$155,129.66

finance
NOW



Gain peace of mind
with Mechanical
Breakdown Insurance.
Ask us how.

Body

2 door, Coupe

Odometer

98,000 km

Engine

2600 cc, Twin Turbo

Fuel Type

Petrol

Transmission

5-Speed Manual, 4WD

Wheels

17.0000"

VIN

-

Reg No.

G0DZ1L

Ext Colour

Black Metallic

History

-

Seats

4 seats

Interior

Black GTR Seats

Audio

-

Stock ID

10981

1996 Nissan Skyline R33 GTR V-Spec. JDM Performance Icon- with prices currently going mad overseas! Auction Grade 4/5 vehicle-recorded 1 Owner/Non Smoker in Japan. Factory R33 GTR Alloys in Black, 2.6 Litre Twin-Turbo RB26 DETT engine, Comprehensive Service History and all original Docs/Mats etc with the vehicle, Upgraded Sports Exhaust System from the R33 400R, 4WD, Air Conditioning, NISMO Intercooler, Suspension and Dash Cluster upgrade (History recorded). Ltd Edition Gold GTR Badging, Better than money in the bank today!

Note- Leather Seat covers only on for protection.

christchurch european

the european specialists

Phone 03 366 8328, Email sales@christchurcheruropean.co.nz
511 Blenheim Road, Sockburn, Christchurch 8042, New Zealand
www.christchurcheruropean.co.nz

Niki Mills - 021 353 315
Paul Mills - 022 536 0868
Michael Mills - 022 043 3700

* Finance calculation based on a 60 month term, 30% deposit and with an example annual fixed interest rate of 9.95%. Actual interest rate may be higher or lower. Includes an establishment fee of \$205.00. Full term total amount payable of \$155,129.66. Estimate only, not an offer of finance. Terms, conditions and lending criteria apply.