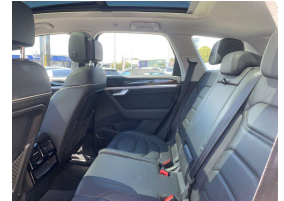
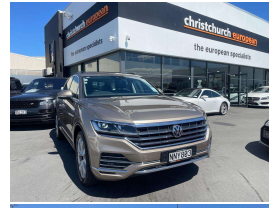


# 2018 Volkswagen Touareg 3.0 TDI V6 210KW New



## VEHICLE INFORMATION

### Cash Price

Includes GST,  
Registration &  
Licensing

**\$64,995**

Finance this vehicle  
from only

**\$223.82**

per week\*

Total Amount Payable

**\$77,692.37**

finance  
**NOW**



Gain peace of mind  
with Mechanical  
Breakdown Insurance.  
Ask us how.

### Body

5 door, RV/SUV

### Odometer

124,000 km

### Engine

3000 cc, TDI Diesel

### Fuel Type

Diesel

### Transmission

8 Speed Automatic, 4WD

### Wheels

20.0000"

### VIN

-

### Reg No.

NNY803

### Ext Colour

Sand Metallic

### History

-

### Seats

5 seats

### Interior

Black Comfort Leather

### Audio

-

### Stock ID

12326

2018 Volkswagen Touareg 3.0 TDI V6 Diesel SEL 210KW New Shape, Easy care Sand Metallic with Black Comfort Leather, Added Panoramic Glass Roof, Optional Air Suspension with CDC, Virtual/Digital Full Cockpit, 14 Way Electric/Heated Seats, Black Roof Rails, Park Assist Package, Ambient Lighting Pack, Added Rear Wheel Steering, LED Lighting, 20" Montero Sports Alloys, Push Button Start, Touch Screen NZ NAV/CD/AUX/Bluetooth Phone and Music, Full Electrics etc. Ultra modern, Amazing economy and value for money here!

**christchurch european**

**the european specialists**

Phone 03 366 8328, Email [sales@christchurcheruropean.co.nz](mailto:sales@christchurcheruropean.co.nz)  
511 Blenheim Road, Sockburn, Christchurch 8042, New Zealand  
[www.christchurcheruropean.co.nz](http://www.christchurcheruropean.co.nz)

Niki Mills - 021 353 315  
Paul Mills - 022 536 0868  
Michael Mills - 022 043 3700

\* Finance calculation based on a 60 month term, 30% deposit and with an example annual fixed interest rate of 9.95%. Actual interest rate may be higher or lower. Includes an establishment fee of \$205.00. Full term total amount payable of \$77,692.37. Estimate only, not an offer of finance. Terms, conditions and lending criteria apply.